



Nissan X-TRAIL

Specifications

Specifications	e-POWER				
	ST	ST-L	Ti-L	ST-L	Ti-L
Engine					
2.5 Litre DOHC 16-valve direct injection 4 cylinder petrol engine	•	•	•		
Power (kW @ rpm)		135 @ 6,000			
Torque (Nm @ rpm)		244 @ 3,600			
e-POWER with 1.5 Litre 16-valve direct injection 3 cylinder petrol engine				•	•
Variable compression turbo				•	•
e-POWER electric motor				•	
Power (kW, front / rear electric motors)				150/100	(Total system output 157)
Torque (Nm, front / rear electric motors)				330/195 ^o	
e-POWER internal combustion engine				•	
Power (kW @ rpm)				106 @ 4,400	
Torque (Nm @ rpm)				250 @ 2,400	
Drivetrain					
CVT (Continuously Variable Transmission) with manual mode	•	•	•		
Electronic shift by wire	•	•	•	•	•
Steering wheel mounted paddle shifters	•	•	•		
Front wheel drive (FWD)	•	•			
Drive mode selector with 3 modes (Auto, Eco, Sport)	•	•			
Intelligent 4x4	o	o	•		
Drive & terrain mode selector with 5 modes (Auto, Eco, Sport, Snow, Off-Road)	o (4x4 only)	o (4x4 only)	•	•	•
e-4ORCE electric-drive four-wheel-control technology				•	•
e-Pedal Step				•	•
Fuel (FWD/4x4)					
Fuel tank capacity (Litres)			55		
Fuel consumption (FWD/4x4, Litres/100km combined cycle) ^a		7.4/7.8	7.8		6.1
CO2 emission (g/km combined cycle) ^a		174/183	183		139
Brakes					
Front & rear disc brakes	•	•	•	•	•
Anti-Lock Braking System (ABS)	•	•	•	•	•
Electronic brake force distribution	•	•	•	•	•
Brake assist	•	•	•	•	•
Electronic parking brake	•	•	•	•	•
Hill Start Assist	•	•	•	•	•
Hill Descent Control	o (4x4 only)	o (4x4 only)	•	•	•
Suspension and steering					
Independent front suspension	•	•	•	•	•
Independent multi-link rear suspension	•	•	•	•	•
Front & rear stabiliser bars	•	•	•	•	•
Dual pinion electric power steering	•	•	•	•	•

Nissan X-TRAIL specifications

	e-POWER				
	ST	ST-L	Ti-L	ST-L	Ti-L
Dimensions					
Exterior					
Overall length (mm)	4,680				
Overall width (mm, including mirrors)	2,065				
Overall height (mm, unladen)	1,725				
Wheelbase (mm)	2,705				
Track width (mm, front/rear)	1,585/1,590				1,575/1,580
Ground clearance unladen (mm, between axles)	205			187	
Turning circle (m, curb-to-curb)	11.1				
Interior					
Head room (mm, first row/second row)	1,050/1,000		999/960		
Leg room (mm, first row/second row)	1,095/892				
Shoulder room (mm, first row second row)	1,451/1,422		1,451/1,398	1,451/1,422	1,451/1,398
Hip room (mm, first row/second row)	1,374/1,274				
5-seat cargo capacity: second row upright (Litres, to roof)	585			575	
7-seat cargo capacity: second row upright/third row folded flat (Litres, to roof)	465				
Weights (FWD/4x4)					
Gross Vehicle Mass (kg) ^a	2,040/2,295		2,135	2,380	
Kerb mass† (kg)	1,540/1,643	1,578/1,666	1,672	1,903	1,911
Maximum braked towing capacity‡ (kg)	2,000			1,650	
Maximum unbraked towing capacity‡ (kg)	750				
Maximum roof load (kg)	100				
Safety and security					
Intelligent Around View® Monitor with Moving Object Detection		•	•	•	•
ProPILOT+		•	•	•	•
Rear view camera	•	•	•	•	•
Rear parking sensors	•	•	•	•	•
Front parking sensors		•	•	•	•
Intelligent Forward Collision Warning	•	•	•	•	•
Intelligent Emergency Braking with junction assist & pedestrian/cyclist detection	•	•	•	•	•
Intelligent Rear Automatic Braking	•	•	•	•	•
Rear Cross Traffic Alert	•	•	•	•	•
Blind Spot Warning	•	•	•	•	•
Intelligent Blind Spot Intervention	•	•	•	•	•
Lane Departure Warning	•	•	•	•	•
Intelligent Lane Intervention	•	•	•	•	•
Intelligent Driver Alert	•	•	•	•	•
Intelligent Cruise Control	•	•	•	•	•
Traffic Sign Recognition	•	•	•	•	•
Tyre Pressure Monitoring System		•	•	•	•
Trailer sway control	•	•	•	•	•
Speed limiter	•	•	•	•	•
Vehicle Dynamic Control (VDC) with Traction Control System (TCS)	•	•	•	•	•
Acoustic Vehicle Alerting System (low speeds up to 30 km/h)				•	•
Rear seat alert	•	•	•	•	•
Temporary use spare wheel and tyre	•	•	•		
Tyre repair kit				•	•
Airbags					
Front seat airbags (driver & front passenger)	•	•	•	•	•
Seat side airbags (driver & front passenger)	•	•	•	•	•
Front row far side airbag (centre)	•	•	•	•	•
Side curtain airbags (driver & passenger side)	•	•	•	•	•
Comfort and convenience					
7.0" TFT Advanced Drive-Assist® Display instrument cluster	•	•		•	
12.3" TFT Advanced Drive-Assist® Display instrument cluster			•		•
10.8" Head-Up Display			•		•
Air-conditioning	•				
Dual-zone automatic climate control		•		•	
Tri-zone automatic climate control			•		•

Nissan X-TRAIL specifications

	e-POWER				
	ST	ST-L	Ti-L	ST-L	Ti-L
Second row air vents	•	•	•	•	•
Intelligent Key™ with push button engine start	•	•	•	•	•
Remote engine start			•		•
Memory system (driver seat & door mirrors)			•		•
Automatic LED headlights	•	•	•	•	•
High Beam Assist	•	•		•	
Adaptive Driving Beam headlights			•		•
Power adjustable, power folding, heated door mirrors	•	•		•	
Power adjustable, power folding, heated door mirrors with tilt to reverse			•		•
Motion sensing power tailgate with position memory			•		•
Built-in rear door sunshades			•		•
Automatic rain-sensing front wipers			•		•
Automatic dimming rear view mirror		•		•	
Intelligent Rear View Mirror			•		•
Capless fuel filler door	•	•	•	•	•

Audio and connectivity

8.0" touchscreen display	•	•		•	
12.3" touchscreen display			•		•
Satellite navigation			•		•
Apple CarPlay® & Android Auto™	•	•		•	
Wireless Apple CarPlay® & wired Android Auto™			•		•
Wireless smartphone charger ^o			•		•
Bluetooth® phone & audio streaming	•	•	•	•	•
6 speaker audio system	•	•		•	
Bose® 10 speaker premium audio system			•		•
Active noise cancelling					•
AM/FM radio	•	•	•	•	•
4 USB instrument panel (data & charge): 1x USB-A, 1x USB-C second row (charge only): 1x USB-A, 1x USB-C	•	•	•	•	•
2 12V outlet (1 x instrument panel, 1 x cargo area)	•	•	•	•	•

Interior

Steering wheel - urethane	•				
Steering wheel - leather-accented*		•	•	•	•
Tilt & telescopic steering wheel adjustment	•	•	•	•	•
Heated steering wheel			•		•
Ambient interior lighting - console tray & door trim			•		•
Butterfly opening centre console	•	•	•	•	•
Front row sun visors with illuminated vanity mirrors	•	•	•	•	•
Divide-N-Hide® configurable cargo system	◦ (5-seat only)	◦ (5-seat only)	•	•	•
Cargo area removable tonneau cover	•	•	•	•	•
Cargo area light	•	•	•	•	•
4 cargo tie-down hooks	•	•	•	•	•
Seating					
5-seat configuration (2:3)	•	•	•	•	•
7-seat configuration (2:3:2)	◦ (4x4 only)	◦ (4x4 only)			
6-way manually adjustable driver seat with 2-way power lumbar/4-way manually adjustable passenger seat	•				
10-way power adjustable driver seat (including 2-way power lumbar)/4-way manually adjustable passenger seat		•		•	
10-way power adjustable driver/passenger seat (including 2-way power lumbar)			•		•
Heated front seats		•	•	•	•
Heated second row outboard seats			•		•
60/40 split fold second row seat with manual recline and centre armrest	•				
40/20/40 split folding second row seat with manual recline, centre pass-through or centre armrest	◦ (7-seat only)	•	•	•	•
Sliding second row seats	◦ (7-seat only)	•	•	•	•
Child restraint anchorage (ISOFIX second row, outboard seats/tether second row, all seats)	•	•	•	•	•

Nissan X-TRAIL specifications

	e-POWER				
	ST	ST-L	Ti-L	ST-L	Ti-L
Trim					
Seat trim – cloth	•				
Seat trim – synthetic leather		•		•	
Seat trim – quilted Nappa leather-accented*			•		•
Front seatback pockets	•	•	•	•	•
Exterior					
Body colour door handles	•	•	•	•	•
V-motion front grille with silver accent	•	•	•		
V-motion front grille with black accent				•	•
Silver roof rails	•	•	•	•	•
Black side moulding	•	•			
Chrome side moulding			•		•
Grey lower front and rear lower fascia	•	•			
Silver lower front and rear lower fascia			•	•	•
Body colour roof (with body colour rear spoiler, shark fin antenna and door mirrors)	•	•	•	•	•
Black painted roof ^{ff} (with black rear spoiler, shark fin antenna and door mirrors)		o	o	o	o
e-POWER badge (front doors & tailgate). e-4ORCE badge (tailgate)				•	•
Exterior – lighting					
LED headlights	•	•	•	•	•
LED tail lights	•	•	•	•	•
LED daytime running lights	•	•	•	•	•
LED fog lights		•	•	•	•
LED high mounted stop light	•	•	•	•	•
LED turn signal in door mirrors	•	•	•	•	•
Exterior – wheel & tyre					
17" alloy wheels with 235/65 R17 tyres	•				
18" alloy wheels with 235/60 R18 tyres		•		•	
19" alloy wheels with 235/55 R19 tyres			•		
20" alloy wheels with 255/45 R20 tyres					•
Exterior – glass					
Privacy glass (second row & rear windows)		•	•	•	•
Tilt & slide power sunroof with panoramic glass roof			•		•
Exterior paint					
Sunset Orange	•	•	•	•	•
Scarlet Ember	•	•	•	•	•
Brilliant Silver [#]	•	•	•	•	•
Gun Metallic [#]	•	•	•	•	•
Caspian Blue [#]	•	•	•	•	•
Diamond Black [#]	•	•	•	•	•
Champagne Silver [#]	•	•	•	•	•
Ivory Pearl [#]	•	•	•	•	•
Ceramic Grey [#]	•	•	•	•	•
Sunset Orange with black roof ^{ff}		•	•	•	•
Ceramic Grey with black roof ^{ff}		•	•	•	•
Ivory Pearl with black roof ^{ff}		•	•	•	•
Caspian Blue with black roof ^{ff}		•	•	•	•
Champagne Silver with black roof ^{ff}		•	•	•	•

Standard
 Not available
 Option

Nissan X-TRAIL specifications

Choose your exterior paint colour



Brilliant Silver



Ivory Pearl



Sunset Orange



Ceramic Grey



Gun Metallic



Diamond Black



Champagne Silver



Scarlet Ember



Caspian Blue



Ivory Pearl with black roof[#]~



Ceramic Grey with black roof[#]~



Champagne Silver with black roof[#]~



Caspian Blue with black roof[#]~



Sunset Orange with black roof[#]~

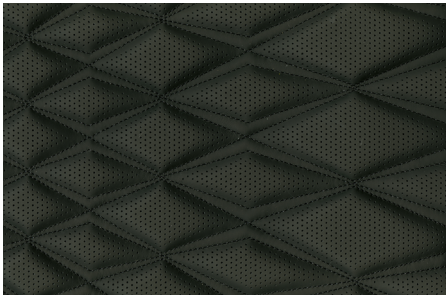
Choose your interior trim



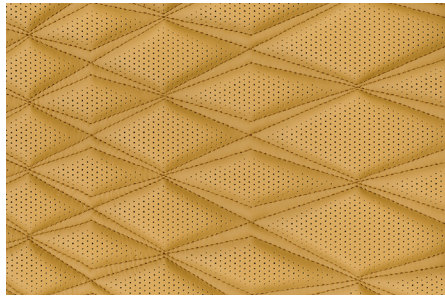
Black cloth seat trim.
Available on ST.



Black synthetic leather seat trim.
Available on ST-L.



Black quilted Nappa leather-accented* seat trim.
Available on Ti-L.



Tan quilted Nappa leather-accented* seat trim.
Available on Ti-L.

- ^o Torque figures are quoted independently for front and rear electric motors respectively and cannot be added together.
- ^Δ Figures tested in accordance with ADR81/02 (combined test). Figures stated for the purposes of comparison amongst vehicles only. Actual fuel consumption and CO2 emissions depends on factors such as traffic conditions, vehicle condition, how you drive and any accessories fitted.
- [▫] Gross Vehicle Mass is the maximum loaded mass of a vehicle.
- [†] Kerb mass is the unladen mass of the vehicle with full tank of fuel without any accessories fitted.
- [‡] Towing capacity is subject to towbar/towball capacity and is based on the fitment of a Genuine Nissan towbar. Towing capacity figure described is a maximum figure. Actual towing capacity depends on the laden mass of the vehicle, driving conditions, fitment of any accessories or towing equipment limitations including the maximum towball download.
- ⁺ ProPILOT cannot prevent collisions. It is the driver's responsibility to be in control of the vehicle at all times. Always monitor traffic conditions and keep both hands on the steering wheel. System operates only when lane markings are detected. Does not function in all weather, traffic and road conditions. System has limited control capability and the driver may need to steer, brake or accelerate at any time to maintain safety. See Owner's Manual for safety information.
- [^] CarPlay is a registered trademark of Apple Inc. Android Auto is a trademark of Google LLC. Compatible device required. Wired connections require a USB connection.
- [°] Compatible device required.
- ^{*} Leather-accented features and upholstery may contain synthetic material. Minor trim variations may occur from time to time.
- [#] In some cases, the printed colours may vary from the actual paint colours.
- [~] Two tone roof available on ST-L & Ti-L models at additional cost.

IMPORTANT: The specifications shown throughout are based on overseas models. Some specifications shown may differ from the final New Zealand models. Please check with your Nissan dealer for final specifications.



FINANCIAL
SERVICES

For more information please visit nissan.co.nz, ask your Nissan Dealer or phone during normal business hours.

All illustrations, information and specifications presented and referred to in this brochure were correct at the time this brochure was approved for printing. The colours in the photographs may vary from actual colours. Nissan New Zealand Ltd. may at its discretion at any time and without prior notice discontinue or change the models, features, specifications, designs and prices of the products referred to in this brochure and any optional equipment without incurring any liability whatsoever to any purchaser or prospective purchaser of any such products. Always consult your Nissan Dealer for the latest information on models, specifications, features, prices, options and availability or visit our website: www.nissan.co.nz. Effective from September 2022.



NissanNZ



@nissan_nz



@NissanNZ



NZNissan